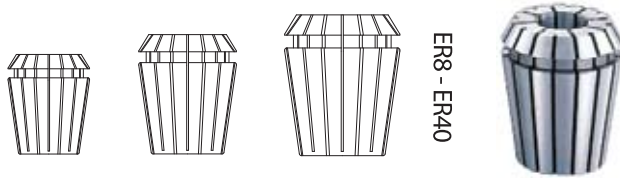


**ER Collet
DIN 6499**

Material : High-Carbon Bearing Steel SUJ2
Surface roughness : <Rz 2.5
Concentricity inspected : According to DIN-Norm



ER 8

Chucking range;
All d ,range = 0.5mm

Size

1.0 / 1.5 / 2.0 / 2.5 / 3.0 / 3.5 / 4.0 / 4.5 / 5.0

ER11

Chucking range;
All d ,range = 0.5mm

Size

1.0 / 1.5 / 2.0 / 2.5 / 3.0 / 3.5 / 4.0 / 4.5 / 5.0 / 5.5 / 6.0 / 6.5 / 7.0

ER16

Chucking range;
d < 5.0 ,range = 0.5mm
d > 5.0 ,range = 1.0mm

Size

1.0 / 1.5 / 2.0 / 2.5 / 3.0 / 3.5 / 4.0 / 5.0 / 6.0 / 7.0 / 8.0 / 9.0 / 10.0

ER20

Chucking range;
d < 6.0 ,range = 0.5mm
d > 6.0 ,range = 1.0mm

Size

2.0 / 2.5 / 3.0 / 3.5 / 4.0 / 4.5 / 5.0 / 6.0 / 7.0 / 8.0 / 9.0 / 10.0 / 11.0 / 12.0 / 13.0

ER25

Chucking range;
d < 8.0 ,range = 0.5mm
d > 8.0 ,range = 1.0mm

Size

2.0 / 2.5 / 3.0 / 3.5 / 4.0 / 4.5 / 5.0 / 5.5 / 6.0 / 6.5 / 7.0 / 8.0 / 9.0 / 10.0 /
11.0 / 12.0 / 13.0 / 14.0 / 15.0 / 16.0

ER32

Chucking range;
d < 8.0 ,range = 0.5mm
d > 8.0 ,range = 1.0mm

Size

2.5 / 3.0 / 3.5 / 4.0 / 4.5 / 5.0 / 5.5 / 6.0 / 6.5 / 7.0 / 8.0 / 9.0 / 10.0 / 11.0 / 12.0 /
13.0 / 14.0 / 15.0 / 16.0 / 17.0 / 18.0 / 19.0 / 20.0

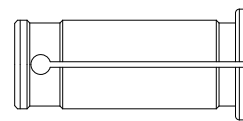
ER40

Chucking range;
d < 9.0 ,range = 0.5mm
d > 9.0 ,range = 1.0mm

Size

3.0 / 3.5 / 4.0 / 4.5 / 5.0 / 5.5 / 6.0 / 6.5 / 7.0 / 7.5 / 8.0 / 9.0 / 10.0 / 11.0 / 12.0 / 13.0 /
14.0 / 15.0 / 16.0 / 17.0 / 18.0 / 19.0 / 20.0 / 21.0 / 22.0 / 23.0 / 24.0 / 25.0 / 26.0

**C Collet
For Power chuck**



C20 / C32 / C42

C20 / C32 / C42

Size

3.0 / 4.0 / 5.0 / 6.0 / 8.0 / 10.0 / 12.0 / 16.0 / 20.0 / 24.0 / 25.0 / 32.0 / MT1 / MT2 / MT3 / MT4